

# Rubber Mountings



**ESG-20001 - Two Pieces Engine Mount**

Height: 3"

DIA: 3,50"

Inner Tube DIA: 0,95"



**ESG-20002 - Two Pieces Engine Mount**

Height: 2"

DIA: 1,85"

Inner Tube DIA: 0,53"

# Rubber Mountings



**ESG-20003  
T Rubber Mount**  
Height: 2,20"  
DIA: 2,95"  
Inner Tube DIA: 0,63"



**ESG-20005 - Rubber Hump Hose**  
Height - 4,50"  
Inner DIA 1: 3,00"  
Inner DIA 2: 2,50"

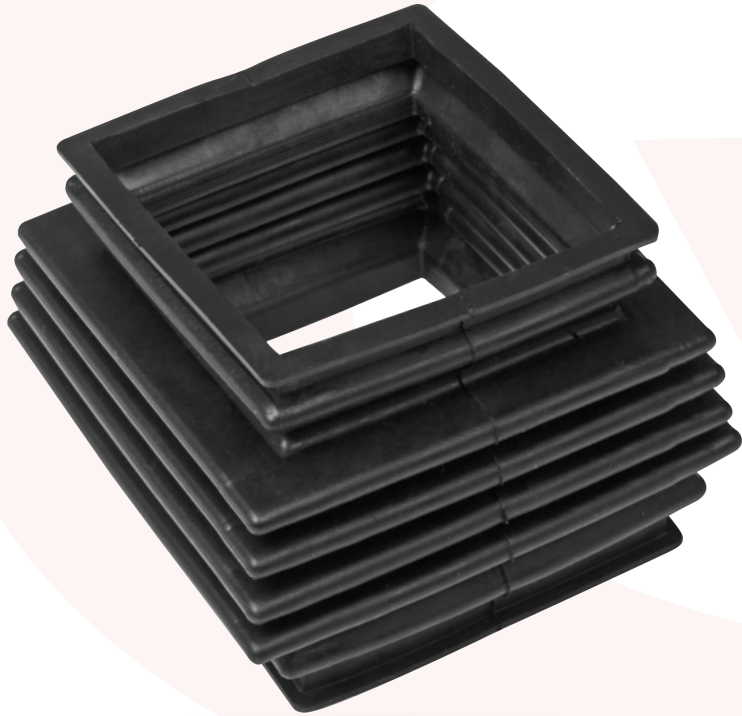


**ESG-20004  
Engine/Transmission Mount**  
Height: 2,30"  
DIA: 3,20"  
Inner Tube DIA: 0,80"



**ESG-20006 - Rubber Hump Hose**  
Inner DIA. 1 - 2,20"  
Inner DIA. 2 - 2,60"  
Height 2,50"

# Rubber Mountings



## **ESG-20008 - Bellow**

Height: 5,00"

Inner Width 1: 4,85" x 4,50"

Inner Width 2: 5,93" x 4,93"



## **ESG-20007 - Rubber Hump Hose**

Inner DIA. 5,50"

Size 25x25

# Rubber Mountings



**ESG-20009 - Rubber Hold Down Catch**  
Size 5"



**ESG-30017**  
Product Range: 20 Size



**ESG-20010**  
Engine/Transmission Mount



**ESG-20011**  
Engine/Transmission Mount

# Rubber Bumpers



**ESG-30010 - Rubber Bumper**  
Product Range: 13 Size



**ESG-30011 - Rubber Bumper**  
Product Range: 8 Size



**ESG-30012 - Rubber Bumper**  
Lenght 620mm  
Hight 92mm

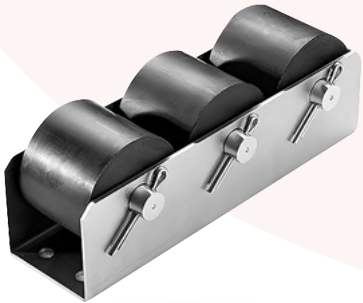
# Rubber Bumpers



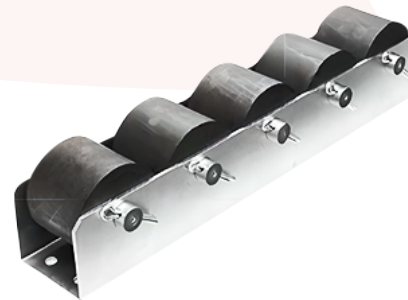
**ESG-30013 - Rubber Roll Bumper**  
Width 136mm



**ESG-30014 - Rubber Roll Bumper**  
Width 216mm



**ESG-30015 - Rubber Roll Bumper**  
Height 100mm  
Width 344mm



**ESG-30016 - Rubber Roll Bumper**  
Height 100mm  
Width 564mm



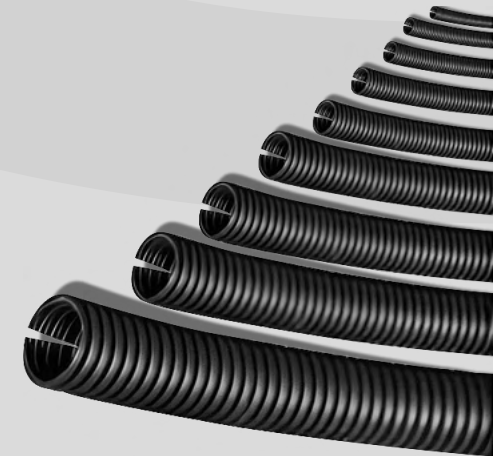
- Product Specifications**
- DIN 73379-1A (NBR/NBR)
  - DIN 73379-1-2A (NBR/CR)
  - DIN 73379-1-2A (ECO/CR)
  - Sizes inner DIA. 1/8" to 3/4"
  - Reinforce Textilea

## Fuel Hoses

## Split Looms



- Product Specifications**
- Rex-Flex polyamid
  - PA-6 VO-UV
  - Halogen free
  - Sizes inner Dia. 1/8" to 4"





**Bronze Ground Stud**

## Plastic Spiral Wrap



### Product Specifications

- Polyethylene
- Sizes inner dia. 5/32" to 1/12"
- Red-Blue-White-Black colors
- UV resistant
- Use on jumper lines, slider hoses, hydraulic hoses etc.



# Clamps

## Hose Clamps



- V Clamps
- Hose Clamps
- Cable Clamps
- T Blot Clamps

## Cable Clamps



# Clamps

- V Clamps
- Hose Clamps
- Cable Clamps
- T Bolt Clamps



**V Clamps**



**T Bolt Clamps**



**Exhaust Clamps**



**Heavy Duty  
V Clamps**

# Relays

Mini Relays • Power Relays • Flashers



## Product Specifications

- 35 Amp to 15 Amp for micro relays
- 20 Amp to 40 Amp for mini relays
- 50 Amp to 80 Amp for power relays
- 12V to 24V
- Water-proof
- Dust-proof
- 4 termals, 5 terminals or changeover

# Buttons

## Starter Buttons • Indicator Lamps



### Starter Buttons

- Black, yellow, red colors
- Stiffness and contact of the terminals are handled by two separate spring system



### Indicator Lamps

- Yellow, red, green, light blue and dark blue colors
- Inner w/0 - w/12V - w/24V light bulb options

# Hose Clamps

Hydraulic Pipe Hose Clamps • Boom Hose Clamps

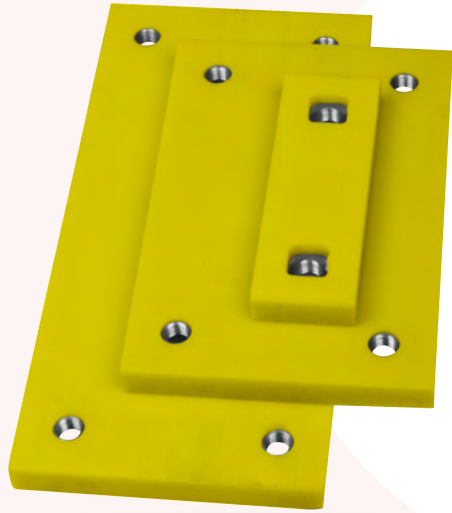


## Product Specifications

- Standart serie clamps DIN 3015/1  
1/4" to 4"
- Heavy serie clamps DIN 3015/2  
1/4" to 2,3/4"
- Twin serie clamps DIN 3015/3  
1/4" to 1,1/2"
- Rubber insert pipe clamps  
1/4" to 8"
- Heavy series twin clamps  
1/2" to 1/4"
- Tube supporting clamp  
1/8" to 1"
- Polyamid or polypropylene materiels

# Castomid - Nylatron Parts

Boom Wear Pad and Plate • Bushings



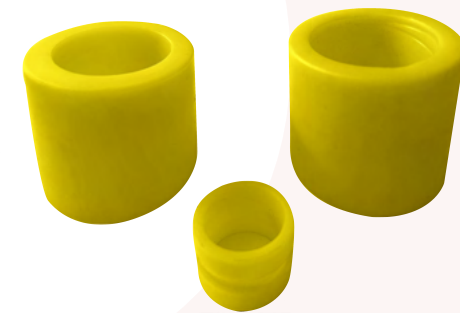
**Wear Pads**

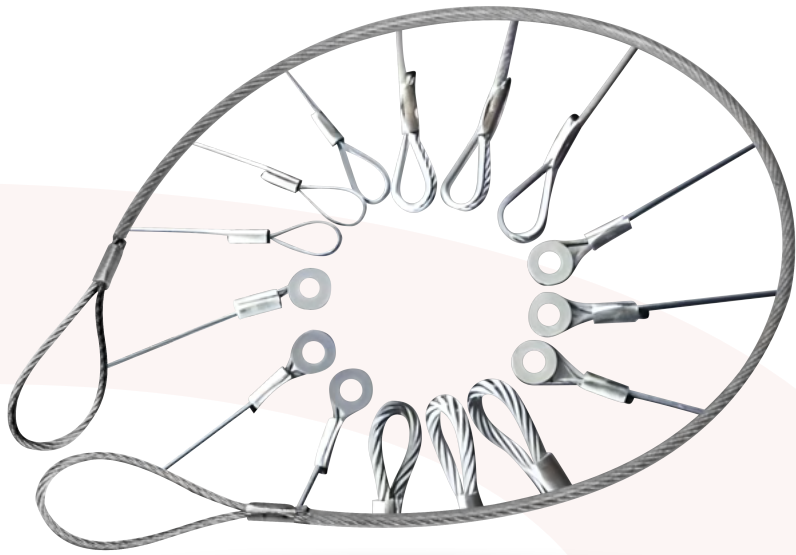
## **Product Specifications**

- Exceptional Abrasion Resistance
- High potency
- Economical due to low density
- Very high tensile and compressive strength
- Corrosion and chemical resistance
- Excellent noise reduction and vibration dampening
- Lightness



**Bushings**





### Product Specifications

- DIN 3088 form P, PK, EP
- Wire DIA. 5/16" to 2,3/8"

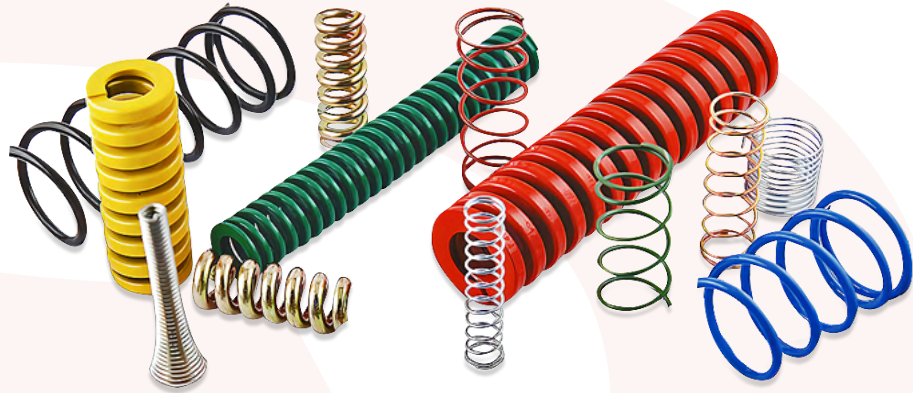
## Hood Cable Loop

## Windshield Washer Hoses

### Product Specifications

- Type c inner DIA. 1/8" to 3/8"
- PVC hose inner DIA. 1/8" and 3/16"
- Best for windshield or headlight washers
- Vacuum tubing SAE J1037 spect.





## Springs

Coil Springs • Compression Springs • Extension Springs

## Snap Rings

DIN 471 • DIN 472

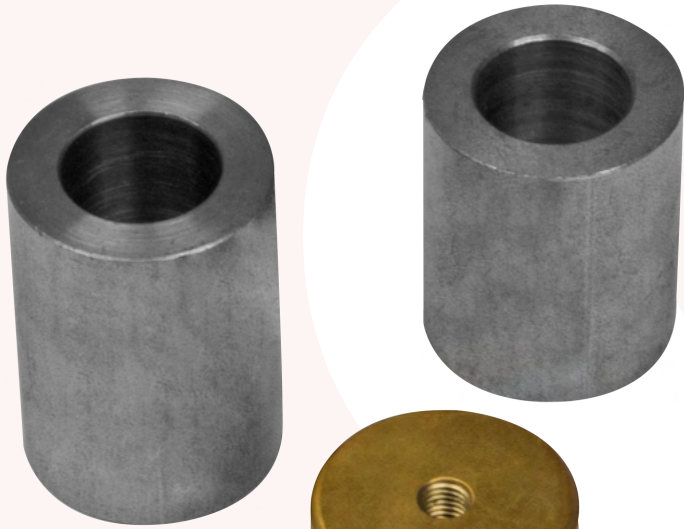




# Spacers

- Black Oxide
- Nickel
- Cadmium
- Finishings

• Aluminium



• Brass



• Steel



# Backup Alarms and Horns

**Trumpet Horn**



Backup Alarms • Trumpet Horns • Signal Horn

## Product Specifications

- High tone - Low tone
- 12V - 24V
- 410Hz & 510Hz - 110dB
- Corrosion Resistant
- One pin - Two pin - Special

**Disc Horn**



**Backup Alarm**



**Backup Alarm**



# Warning Lights

Led Beacons

## Product Specifications

- Colors: Yellow, Red, Green
- 3 Function - 1 Flash
- Water-proof
- Dust-proof



# Work Lights

Led Beacons



# Gas Springs

- Free type
- Locking type
- Various connection type



# Gaskets

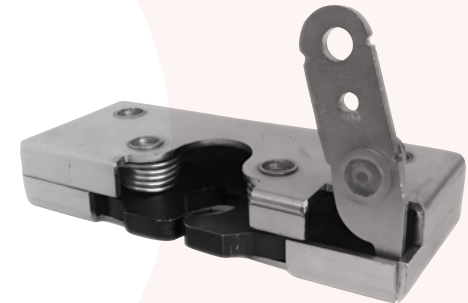
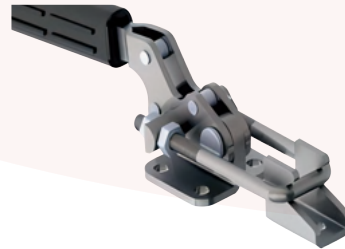
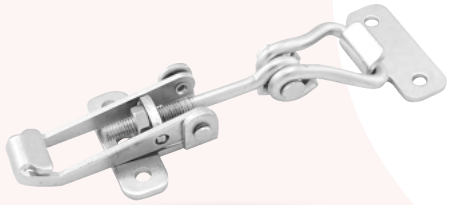
Rubber Gaskets • Edge Trims • Weatherstrips



# Locks

## Product Specifications

- Compression Latches
- Hood Locks
- Cabin Locks
- Forklift Locks
- Latch Clamps



# Hinges

